

FOR LEASE :: APPROX. 965sf RETAIL SPACE

6549 PARDALL RD. | ISLA VISTA, CA



PROPERTY BRIEF

Rarely available retail location poised to engage the niche market of the UCSB campus. This property is located in the center of Isla Vista's retail corridor on Pardall Rd., surrounded by apartments and student housing.

Type :: Retail

Size :: Approx. 965 SF

Lease Rate :: \$2.95/SF Modified Gross

Utilities :: Paid by tenant

Term :: 3-5 years

Parking :: One (1) reserved

Restrooms :: Private

Available :: Immediately

CSO :: 3%

The information provided here has been obtained from the owner of the property or from other sources deemed reliable. We have no reason to doubt its accuracy, but we do not guarantee it.

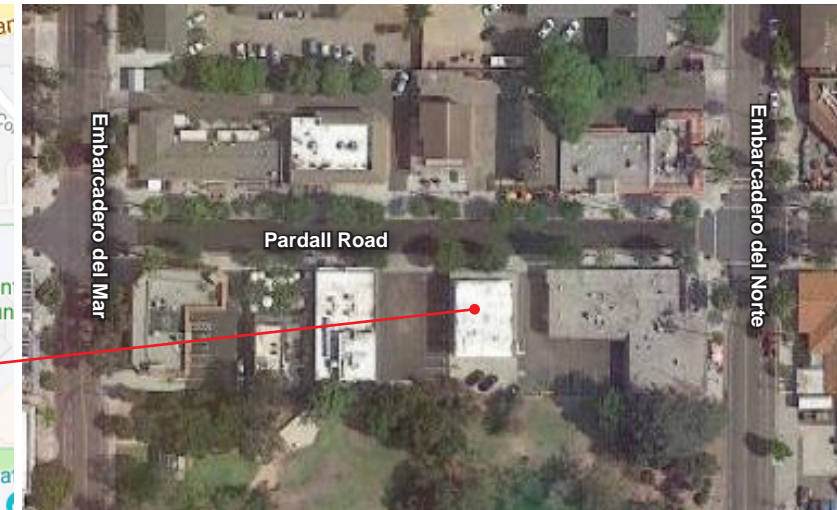
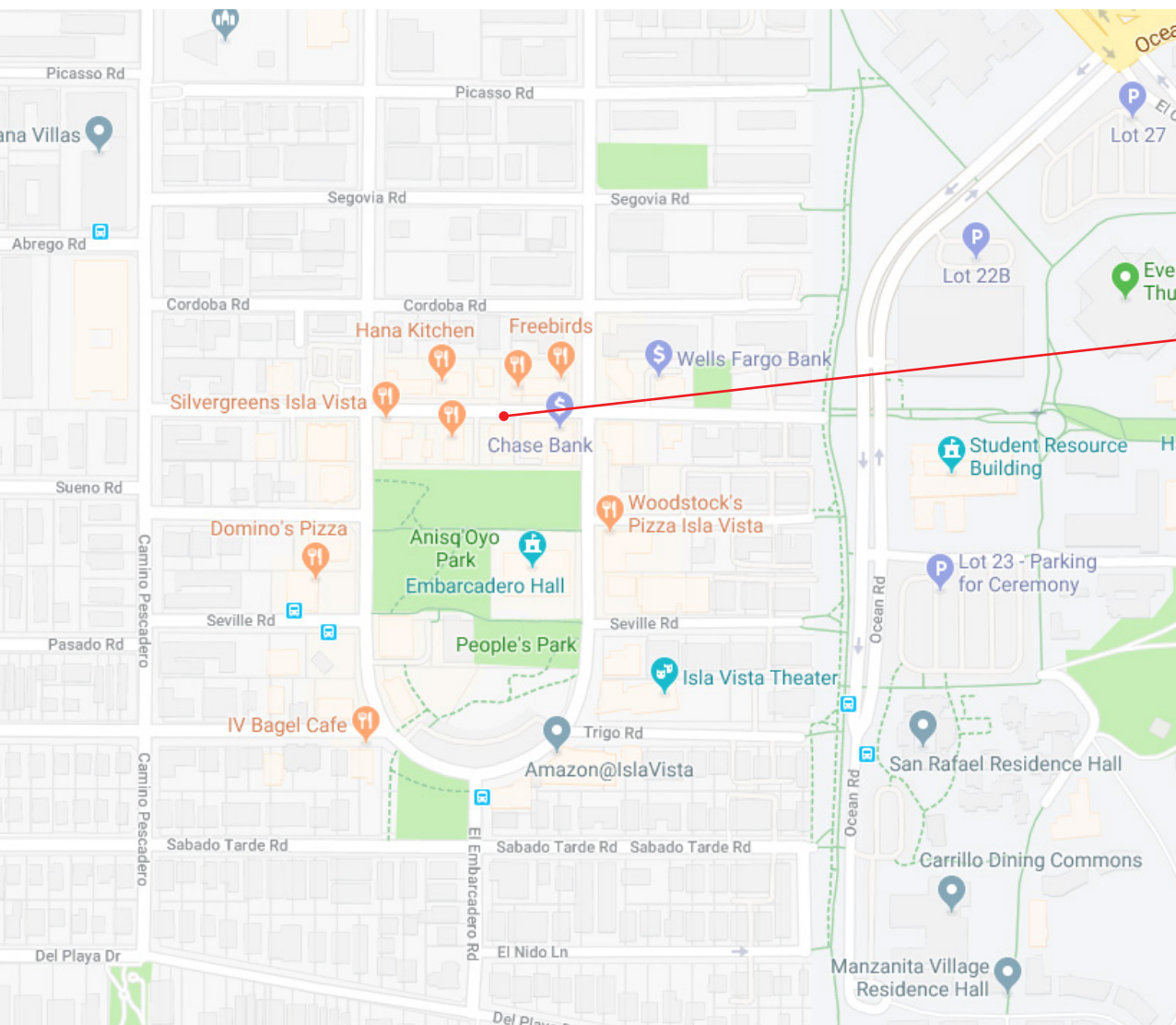
Justin Diem
805.879.9634
jdiem@radiusgroup.com
CA Lic. 02058176

Gene Deering
805.879.9623
gdeering@radiusgroup.com
CA Lic. 01450943



FOR LEASE :: APPROX. 965sf RETAIL SPACE

6549 PARDALL RD. | ISLA VISTA, CA



The information provided here has been obtained from the owner of the property or from other sources deemed reliable. We have no reason to doubt its accuracy, but we do not guarantee it.

Justin Diem
805.879.9634
jdiem@radiusgroup.com
CA Lic. 02058176

Gene Deering
805.879.9623
gdeering@radiusgroup.com
CA Lic. 01450943

